

# TECH BRIEF:

## SATECH MODULAR PERIMETER GUARDING SYSTEMS

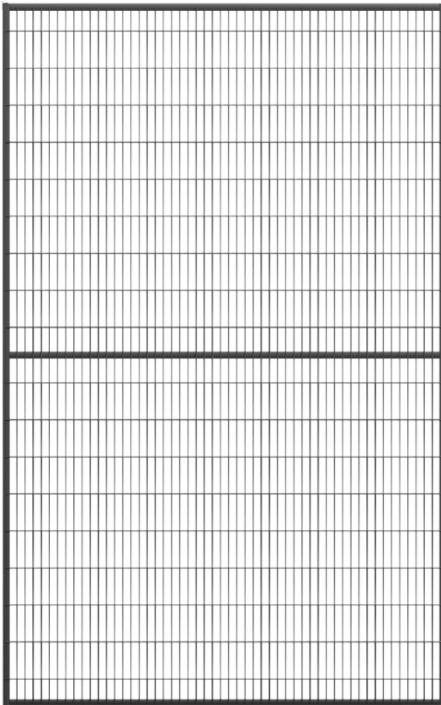
### OVERVIEW

- Installs quickly and easily
- Easy field modifications
- Rugged, steel construction
- Design custom guards from modular panels and connection systems

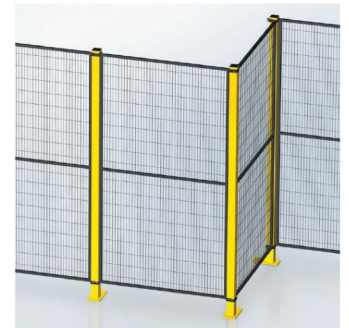
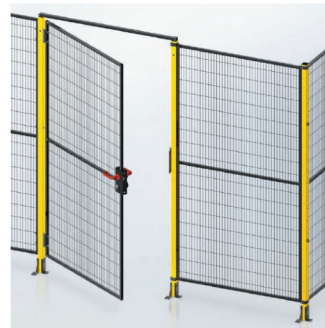
- Meets regulatory standards:
  - Safety: EN ISO 13857
  - Anti-climbing: EN ISO 14120-5.18
  - Visibility: EN ISO 14120-5.9



### FENCE PANELS



### PANEL CONNECTION SYSTEMS



#### GREEN/FAST System

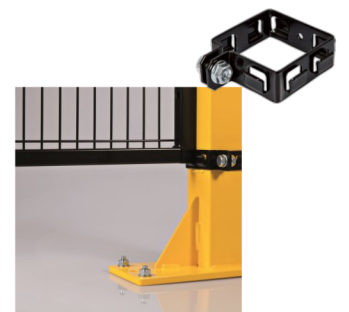
- Panels slip onto footer posts, no posts needed
- Extruded steel tube
- RAL9005 Black
- Welded baseplate with 4 anchor points
- Bolt connections on footer, coupling clip for tops.
- Fast, easy assembly

#### BASIC posts

- 40 x 40 mm profile post
- Extruded steel tube
- Height (mm): 2060, 2640
- RAL1021 Yellow
- Welded or bolt on baseplate with 3 anchor points
- Bolt connections or Captive fastening clip

#### STRONG posts

- 60 x 60 mm profile post
- Extruded steel tube
- Height (mm): 2060, 2640
- RAL1021 Yellow
- Welded baseplate with 4 anchor points
- Captive fastening clip
- Maximum impact resistance



### Framed panels

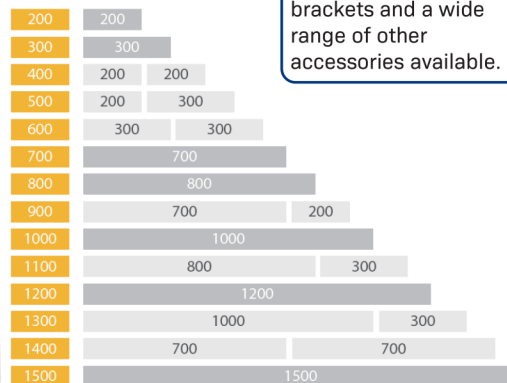
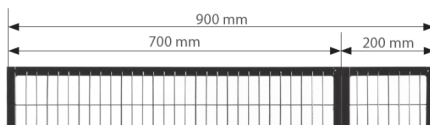
- 20 x 20 mm frame profile
- 22 x 100 mm fence grid
- 3 mm steel wire
- Height (mm): 1900, 2460
- Widths (mm): 200, 300, 700, 800, 1000, 1200, 1500
- RAL9005 Black

### PANEL COMBINATIONS/LENGTHS

Stocked panels are available in 7 standard widths (mm):

200, 300, 700, 800, 1000, 1200, 1500

Combinations of these standard widths reach the intermediate dimensions, in 100 mm steps. Panels are bolted to each other to fill the required spacing between posts.



Door kits, custom angle brackets and a wide range of other accessories available.

### DESIGN SERVICES



Guarding systems are custom designed for each client. Each design generates 3D models, isometric drawings, and parts list.

### SCHMERSAL SCHWEIZ AG

Moosmattstrasse 3  
 8905 Arni - Schweiz  
 Telefon +41-(0) 43-3 11 22 33  
 Telefax +41-(0) 43-3 11 22 44  
 info-ch@schmersal.com | www.schmersal.ch



# TECH BRIEF:

## SCHMERSAL INTERLOCK DEVICES FOR SATECH GUARDS

SCHMERSAL offers a wide range of compatible safety locks, safety sensors, and other accessories to complete the safety guarding solution. These devices have stock mounting brackets and accessories for use with SATECH guards.

**SATECH**  
Modular Machine Guards



### AZM300

- Electronic Solenoid Interlock
- RFID sensor, offers individual coding ("High" to ISO14119)
- 1,000 N Locking force
- Adjustable latching force 25/50N
- Symmetrical mounting for right- and left-hinged doors
- Can be used as end stop
- 3 actuating directions
- 3 LEDs signal operating status



### AZM201

- Electronic Solenoid Interlock
- RFID sensor, offers individual coding ("High" to ISO14119)
- 2,000 N Locking force
- Door handle actuator
- Optional inside emergency exit handle
- Actuator retracts into handle
- 3 LEDs signal operating status
- Lockout/tagout devices available



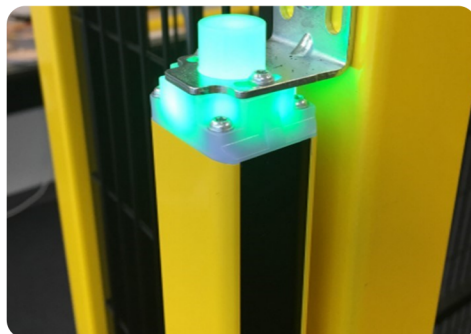
### BDF200

- Machine controls
- Housing matches AZM201
- Up to 4 control operations
- Control types:
  - E-Stop
  - Pushbutton
  - Illuminated pushbutton
  - Mushroom button
  - Signal light
  - Selector switch
  - Keyed selector
- Field customizable version



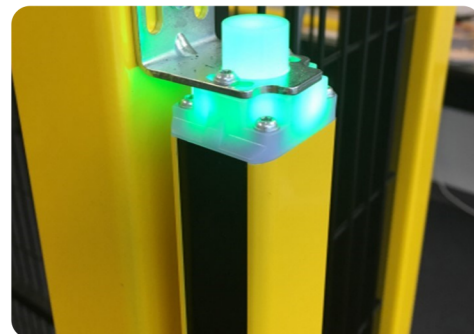
### RSS16

- Electronic Safety Sensor
- RFID sensor, offers individual coding ("High" to ISO14119)
- 3 actuating directions
- Optional magnetic latch
  - 40 N from front or back
  - 60 N from top
- Tolerates misalignments
- Optional M12 connector
- Serial Diagnostic version
- Wire in series without detriment to the safety level (to PLe)
- LEDs for status signaling



### SLC440

- Safety Light Curtain
- Multiple integrated functions:
  - blanking, double reset, contactor control
  - automatic mode, re-start mode, and beam coding
- Extruded aluminum housing, rectangular profile 28 x 33mm
- Protection heights from 170 to 1930 mm
- 14 or 30 mm resolutions for point of operation guarding
- 2, 3, or 4 beam grid for perimeter guarding
- LED signal endcaps
- Bluetooth interface



### SLC445

- Safety Light Curtain
- Muting function
  - Allows materials to pass in while not allowing workers
- Extruded aluminum housing, rectangular profile 28 x 33mm
- Protection heights from 170 to 1770 mm
- 14 or 30 mm resolutions for point of operation guarding
- 2, 3, or 4 beam grid for perimeter guarding
- LED signal endcaps

#### SCHMERSAL SCHWEIZ AG

Moosmattstrasse 3  
8905 Arni - Schweiz  
Telefon +41-(0) 43-3 11 22 33  
Telefax +41-(0) 43-3 11 22 44  
info-ch@schmersal.com | www.schmersal.ch